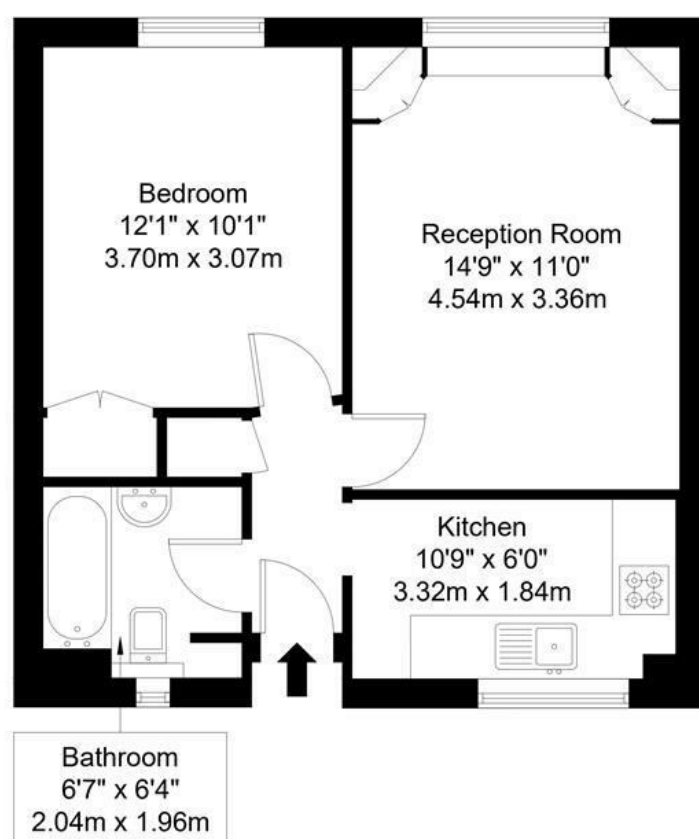
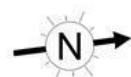


Upper Richmond Road, SW15 6TR

Approx Gross Internal Area = 42.6 sq m / 458 sq ft



Fourth Floor

Ref :

Copyright

**B L E U
P L A N**

The Floor plan is not to scale and measurements and areas shown are approximate and therefore should be used for illustrative purposes only. The plan has been prepared in accordance with the RICS code of Measuring Practice and whilst we have confidence in the information produced it must not be relied on. Maximum lengths and widths are represented on the floor plan. If there is any aspect of particular importance, you should carry out or commission your own inspection of the property.
Copyright @ BLEUPLAN

DISCLAIMER•These particulars are intended to give a fair and substantially correct overall description for the guidance of intending purchasers and do not constitute an offer or part of a contract. Prospective purchasers and/or lessees ought to seek their own professional advice.
•All descriptions, dimensions, areas, references to condition and necessary permissions for use and occupation and other details are given in good faith and are believed to be correct, but any intending purchasers should not rely on them as statements or representations of fact, but must satisfy themselves by inspection or otherwise as to the correctness of each of them.
•All measurements are approximate.



Ormonde Court, Putney, SW15

A stunning one bedroom apartment on the fourth/top floor (with lift) of this popular Art Deco development in the heart of Putney. Offered on an unfurnished basis and benefiting from wood floors, a lovely communal garden and from being a short walk from Putney High Street, the accommodation comprises an entrance hallway, bright reception room, fitted kitchen, double bedroom and bathroom. Ormonde Court is ideally located for all the amenities and transport Putney has to offer. The heating and hot water is also included in the rent. Available now.



- RECEPTION ROOM
- DOUBLE BEDROOM
- COMMUNAL GARDENS
- TOP FLOOR (WITH LIFT)
- EPC E
- FITTED KITCHEN
- BATHROOM
- PORTER
- HEATING & HOT WATER INCLUDED
- COUNCIL TAX BAND C

Per Calendar Month
£1,650 Per Calendar Month

